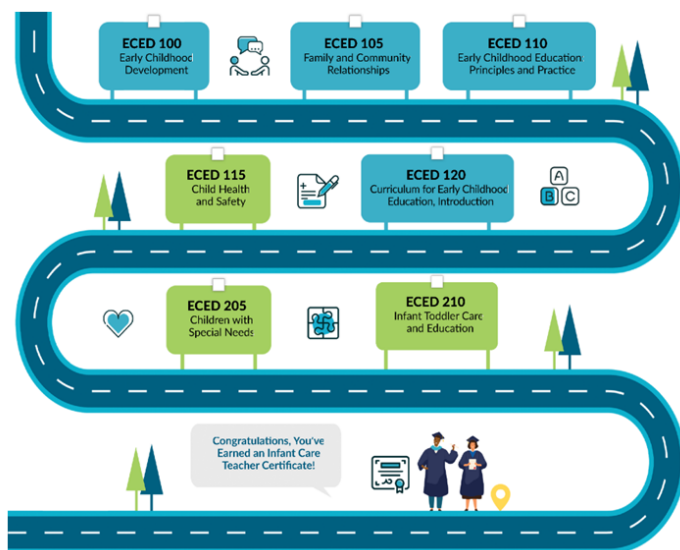


ECE INFANT CARE TEACHER



Certificate of Completion

Program Code: 3P40950

The Early Childhood Education (ECE) Infant Care Teacher certificate is designed, as an optional level in a series of certificate options, to prepare students for entry into childcare and education support in a variety of state licensed facilities including preschool and childcare center. In addition to the requirements of completing seven core courses, students can be expected to learn the following: theories, principles and practices of an infant/toddler program. Content includes respectful and responsive caregiving, licensing and regulation issues, philosophy, infant and family needs, activities and routines, and enriching, safe, healthy environments with an emphasis on developmentally appropriate, culturally sensitive care in group settings. Students completing these courses will meet the requirements of the Department of Social Services to work in a licensed private preschool or childcare center as a fully qualified infant care teacher.

To earn a certificate, students complete the required and elective courses as listed with a grade of P (pass). The exception is for WFPR 100 and/or WFPR 101 courses. If those courses are required or listed as an elective, students will not receive a grade and instead must complete at least 36 hours in either WFPR 100 or WFPR 101. For programs/courses that allow credit for prior learning, at least 75% of all course work must be completed at North Orange Continuing Education.

| Code | Title | Hours |
|---------------------|--|-------|
| Core Courses | | |
| ECED 100 | Early Childhood Development | 54 |
| ECED 105 | Family and Community Relationships | 36 |
| ECED 120 | Curriculum for Early Childhood Education, Introduction | 54 |
| ECED 115 | Child Health and Safety | 36 |
| ECED 110 | Early Childhood Education, Principles and Practice | 54 |
| ECED 205 | Children with Special Needs | 36 |

| | | |
|--------------------|-----------------------------------|------------|
| ECED 210 | Infant-Toddler Care and Education | 54 |
| Total Hours | | 324 |

Plan of Study

First Year

| Semester 1 | Hours | Semester 2 | Hours |
|------------|-------|-------------|------------|
| ECED 100 | | 54 ECED 110 | 54 |
| ECED 105 | | 36 ECED 205 | 36 |
| ECED 120 | | 54 ECED 210 | 54 |
| ECED 115 | | 36 | |
| | | 180 | 144 |

Total Hours 324

List of Courses

ECED 100 **54 Hours**

Early Childhood Development

An introduction to the developmental stages of children from prenatal to middle childhood with emphasis on the physical, cognitive, language and social/emotional milestones. Application of developmental and learning theories addressed. This course is part of a program approved by the California Department of Social Services for employment in private facilities. *(Apportionment)*

ECED 105 **36 Hours**

Family and Community Relationships

Examination of the sociological relationships between family and society; institutional, racial, social, and economical factors affecting the family and the child. Textbook required. This course is part of a program approved by the California Department of Social Services for employment in private facilities. *(Apportionment)*

ECED 110 **54 Hours**

Early Childhood Education, Principles and Practice

Course examines the history, basic principles, and philosophies of various types of early childhood programs, emphasizing the role of the adult and characteristics of quality programs. This course is part of a program approved by the California Department of Social Services, Community Care Licensing, for employment in private facilities only. Textbook required. This course is part of a program approved by the California Department of Social Services for employment in private facilities. *(Apportionment)*

ECED 115 **36 Hours**

Child Health and Safety

For teachers and directors of pre-schools, this course will focus on the skills and knowledge needed for developing emergency plans and responding to health and safety issues in the classroom. Textbook required. This course is part of a program approved by the California Department of Social Services for employment in private facilities. *(Apportionment)*

ECED 120 54 Hours

Curriculum for Early Childhood Education, Introduction

Prerequisite(s): ECED 100: Early Childhood Development.

This course provides the foundation for curriculum planning, implementation, observation, assessment and evaluation. Emphasis includes modalities, learning styles, environments, activities, schedules, routines and adaptations to facilitate learning for all children. This course is part of a program approved by the California Department of Social Services for employment in private facilities. Textbook required. This course is part of a program approved by the California Department of Social Services for employment in private facilities. (*Apportionment*)

ECED 205 36 Hours

Children with Special Needs

This course offers a broad study of children with special needs and early childhood education as it relates to inclusion. This course covers federal and state laws and regulations, terminology and definitions, appropriate practices and intervention. This course is part of a program approved by Department of Social Services, Community Care Licensing. This course is part of a program approved by the California Department of Social Services for employment in private facilities. (*Apportionment*)

ECED 210 54 Hours

Infant-Toddler Care and Education

This course explores the theories, principles and practices of an infant/toddler program. Content includes respectful, responsive care giving; licensing and regulation issues; and enriching, safe, healthy developmentally appropriate environments. This course is part of a program approved by the California Department of Social Services for employment in private facilities. (*Apportionment*)