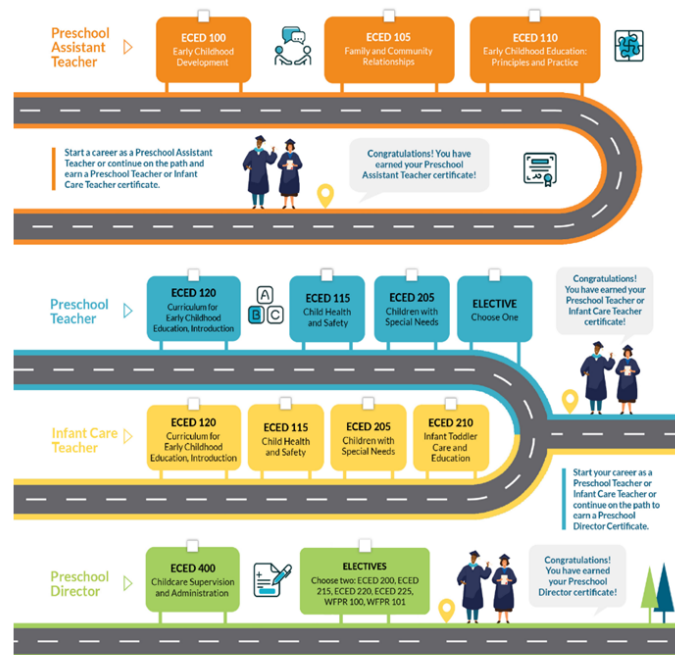


# ECE PRESCHOOL ASSISTANT TEACHER



## Certificate of Completion

Program Code: 3P40948

The Early Childhood Education (ECE) Preschool Assistant Teacher certificate is designed, as the first level in a series of certificate options, to prepare students for entry-level childcare and education support in a variety of state licensed facilities including preschool and childcare center. Students can be expected to learn the following: developmental stages of children from prenatal to middle childhood, theories in early childhood education, developmentally appropriate curriculum and practice, examination of the history, basic principles, and philosophies of various types of early childhood programs. With a solid foundation in the core areas of early childhood education, students will be better prepared to meet the demands in assisting classroom teachers in caring for young children. Students completing these courses will meet the requirements of the Department of Social Services to work in a licensed private preschool or childcare center as a fully qualified preschool assistant teacher.

To earn a certificate, students complete the required and elective courses as listed with a grade of P (pass). The exception is for WFPR 100 Career Skills and Resource Lab and/or WFPR 101 Virtual Career Skills and Resource Lab courses. If those courses are required or listed as an elective, students will not receive a grade and instead must complete at least 36 hours in either WFPR 100 Career Skills and Resource Lab or WFPR 101 Virtual Career Skills and Resource Lab. For programs/courses that allow credit for prior learning, at least 75% of all course work must be completed at North Orange Continuing Education.

ECED 105	Family and Community Relationships	36
ECED 110	Early Childhood Education, Principles and Practice	54
<b>Total Hours</b>		<b>144</b>

## Plan of Study

### First Year

Semester 1	Hours	Semester 2	Hours
ECED 100		54 ECED 110	54
ECED 105	36		
		<b>90</b>	<b>54</b>

**Total Hours 144**

## List of Courses

### ECED 100 54 Hours

#### Early Childhood Development

An introduction to the developmental stages of children from prenatal to middle childhood with emphasis on the physical, cognitive, language and social/emotional milestones. Application of developmental and learning theories addressed. This course is part of a program approved by the California Department of Social Services for employment in private facilities. (*Apportionment*)

### ECED 105 36 Hours

#### Family and Community Relationships

Examination of the sociological relationships between family and society; institutional, racial, social, and economical factors affecting the family and the child. Textbook required. This course is part of a program approved by the California Department of Social Services for employment in private facilities. (*Apportionment*)

### ECED 110 54 Hours

#### Early Childhood Education, Principles and Practice

Course examines the history, basic principles, and philosophies of various types of early childhood programs, emphasizing the role of the adult and characteristics of quality programs. This course is part of a program approved by the California Department of Social Services, Community Care Licensing, for employment in private facilities only. Textbook required. This course is part of a program approved by the California Department of Social Services for employment in private facilities. (*Apportionment*)

Code	Title	Hours
<b>Core Courses</b>		
ECED 100	Early Childhood Development	54