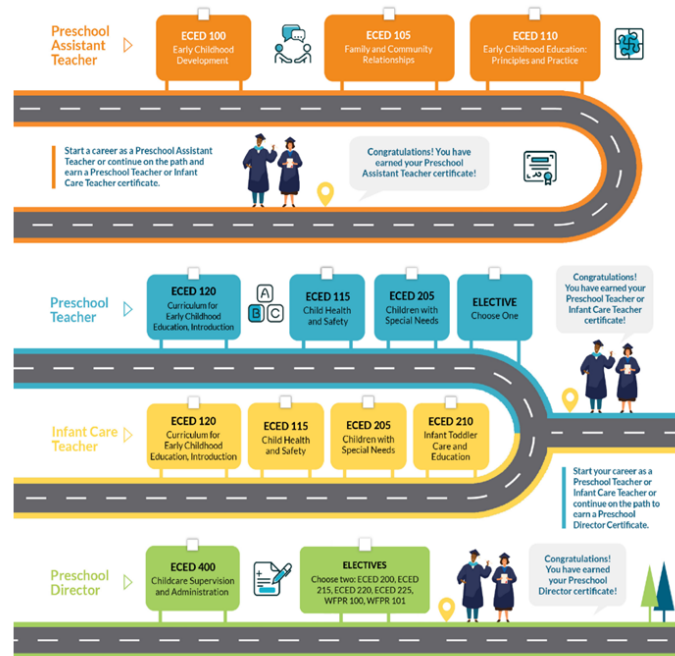


ECE PRESCHOOL DIRECTOR



Certificate of Completion

Program Code: 3P40952

The Early Childhood Education (ECE) Preschool Director certificate is designed, as the third level in a series of certificate options, to prepare students the academic tools to plan and administer a childcare program in a variety of state licensed facilities including preschool or childcare center. In the program, students are required to complete the eight core courses and two elective courses, which prepare the students with a solid foundation in early care and education. In addition, students can be expected to learn and develop needed knowledge and skills to manage and supervise in an administrative position and participate in workplace efficiently. This includes administrative tools, and techniques needed to organize, open, and operate an early care education program. To be eligible for this certificate, two enriched elective courses are required as well. Students completing this program will meet the requirements of the Department of Social Services to work in a licensed private preschool or childcare center as a Director.

To earn a certificate, students complete the required and elective courses as listed with a grade of P (pass). The exception is for WFPR 100 Career Skills and Resource Lab and/or WFPR 101 Virtual Career Skills and Resource Lab courses. If those courses are required or listed as an elective, students will not receive a grade and instead must complete at least 36 hours in either WFPR 100 Career Skills and Resource Lab or WFPR 101 Virtual Career Skills and Resource Lab. For programs/courses that allow credit for prior learning, at least 75% of all course work must be completed at North Orange Continuing Education.

Code	Title	Hours
Core Courses (Required 378 Hours)		
ECED 100	Early Childhood Development	54
ECED 105	Family and Community Relationships	36

ECED 120	Curriculum for Early Childhood Education, Introduction	54
ECED 115	Child Health and Safety	36
ECED 110	Early Childhood Education, Principles and Practice	54
ECED 205	Children with Special Needs	36
ECED 210	Infant-Toddler Care and Education	54
ECED 400	Child Care Supervision and Administration	54
Elective Courses (Required 72 hours)		
Must choose two of six courses:		
ECED 215	Language Arts and Literacy in Early Childhood	36
ECED 225	Early Childhood Education, Music and Movement	36
ECED 200	Early Childhood Education, Science and Math	36
ECED 220	Early Childhood Education, Creative Experiences	36
WFPR 100 or WFPR 101	Career Skills and Resource Lab or Virtual Career Skills and Resource Lab	36

Total Hours 450

First Year

Semester 1	Hours	Semester 2	Hours
ECED 100	54	ECED 110	54
ECED 105	36	ECED 205	36
ECED 120	54	ECED 210	54
ECED 115	36	ECED 215, 225, 200, 220, WFPR 100, or WFPR 101 (Electives Course: First Choice - Must Choose 2 of 6)	36
		180	180

Second Year

Semester 1	Hours
ECED 400	54
ECED 215, 225, 200, 220, WFPR 100, or WFPR 101 (Electives Course: Second Choice - Must Choose 2 of 6)	36
90	

Total Hours 450

ECED 100 54 Hours

Early Childhood Development

An introduction to the developmental stages of children from prenatal to middle childhood with emphasis on the physical, cognitive, language and social/emotional milestones. Application of developmental and learning theories addressed. This course is part of a program approved by the California Department of Social Services for employment in private facilities. (*Apportionment*)

<p>ECED 105 Family and Community Relationships Examination of the sociological relationships between family and society; institutional, racial, social, and economical factors affecting the family and the child. Textbook required. This course is part of a program approved by the California Department of Social Services for employment in private facilities. <i>(Apportionment)</i></p>	<p>36 Hours</p>	<p>ECED 215 Language Arts and Literacy in Early Childhood This course examines the teacher's role in promoting and facilitating children's emerging literacy and language development through the use of storytelling, books, songs, flannel board stories and puppetry. This course is part of a program approved by the California Department of Social Services, for employment in a private facility. <i>(Apportionment)</i></p>	<p>36 Hours</p>
<p>ECED 110 Early Childhood Education, Principles and Practice Course examines the history, basic principles, and philosophies of various types of early childhood programs, emphasizing the role of the adult and characteristics of quality programs. This course is part of a program approved by the California Department of Social Services, Community Care Licensing, for employment in private facilities only. Textbook required. This course is part of a program approved by the California Department of Social Services for employment in private facilities. <i>(Apportionment)</i></p>	<p>54 Hours</p>	<p>ECED 220 Early Childhood Education, Creative Experiences In this course, students explore and experience how developmentally appropriate creative experiences can enhance children's learning while developing fine motor, creative expression and problem-solving skills. This course is part of a program approved by the California Department of Social Services for employment in private facilities. <i>(Apportionment)</i></p>	<p>36 Hours</p>
<p>ECED 115 Child Health and Safety For teachers and directors of pre-schools, this course will focus on the skills and knowledge needed for developing emergency plans and responding to health and safety issues in the classroom. Textbook required. This course is part of a program approved by the California Department of Social Services for employment in private facilities. <i>(Apportionment)</i></p>	<p>36 Hours</p>	<p>ECED 225 Early Childhood Education, Music and Movement Explores areas of music and movement appropriate to a child's development through participating and experimenting. Textbook Required. This course is part of a program approved by the California Department of Social Services for employment in private facilities. <i>(Apportionment)</i></p>	<p>36 Hours</p>
<p>ECED 120 Curriculum for Early Childhood Education, Introduction <i>Prerequisite(s): ECED 100: Early Childhood Development.</i> This course provides the foundation for curriculum planning, implementation, observation, assessment and evaluation. Emphasis includes modalities, learning styles, environments, activities, schedules, routines and adaptations to facilitate learning for all children. This course is part of a program approved by the California Department of Social Services for employment in private facilities. Textbook required. This course is part of a program approved by the California Department of Social Services for employment in private facilities. <i>(Apportionment)</i></p>	<p>54 Hours</p>	<p>ECED 400 Child Care Supervision and Administration <i>Prerequisite(s): ECED 100 Early Childhood Development, and ECED 105 Family Community Relations, and ECED 110 ECE Program Principles and Practice, and ECED 115 Child Health and Safety, and ECED 120 Curriculum for Early Childhood Education, Introduction.</i> This course covers the laws and regulations to operate a childcare center. Upon completion, the student will have learned business and management skills, health and safety, and parent/child relationship. This course is part of a program approved by the California Department of Social Services for employment in private facilities. <i>(Apportionment)</i></p>	<p>54 Hours</p>
<p>ECED 200 Early Childhood Education, Science and Math Plan, organize and implement activities that help children develop skills, appreciation and enthusiasm for science and math. Textbook Required. This course is part of a program approved by the California Department of Social Services for employment in private facilities. <i>(Apportionment)</i></p>	<p>36 Hours</p>	<p>WFPR 100 Career Skills and Resource Lab Free, flexible scheduling to complete and receive help on homework and training on computer, industry related and employability skills. <i>(Apportionment)</i></p>	<p>18-180 Hours</p>
<p>ECED 205 Children with Special Needs This course offers a broad study of children with special needs and early childhood education as it relates to inclusion. This course covers federal and state laws and regulations, terminology and definitions, appropriate practices and intervention. This course is part of a program approved by Department of Social Services, Community Care Licensing. This course is part of a program approved by the California Department of Social Services for employment in private facilities. <i>(Apportionment)</i></p>	<p>36 Hours</p>	<p>WFPR 101 Virtual Career Skills and Resource Lab Lab designed for online students to have access to seminars, assistance, and resources related to Career Technical Education and/or employment skills. <i>(Apportionment)</i></p>	<p>36 Hours</p>
<p>ECED 210 Infant-Toddler Care and Education This course explores the theories, principles and practices of an infant/toddler program. Content includes respectful, responsive care giving; licensing and regulation issues; and enriching, safe, healthy developmentally appropriate environments. This course is part of a program approved by the California Department of Social Services for employment in private facilities. <i>(Apportionment)</i></p>	<p>54 Hours</p>		